

<u>Name of plant</u>	<u>Which part do we eat?</u>	<u>Picture</u>

Bulbs and seeds

If we look after them carefully, **bulbs** and **seeds** can grow into **big plants**.

Can you match the fully-grown plants to their bulbs or seeds? Cut the pictures out carefully and stick them in the right place on the next page.



Identifying bulbs and seeds

Name of plant

Stick plant or tree here

Stick bulb or seed here

Does it start from a
bulb or a seed?

Name of plant

Stick plant or tree here

Stick bulb or seed here

Does it start from a
bulb or a seed?

Name of plant

Stick plant or tree here

Stick bulb or seed here

Does it start from a
bulb or a seed?

Name of plant

Stick plant or tree here

Stick bulb or seed here

Does it start from a
bulb or a seed?

Name of plant

Stick plant or tree here

Stick bulb or seed here

Does it start from a
bulb or a seed?

Parts of a Plant

Using the words below, label the different parts of a plant.

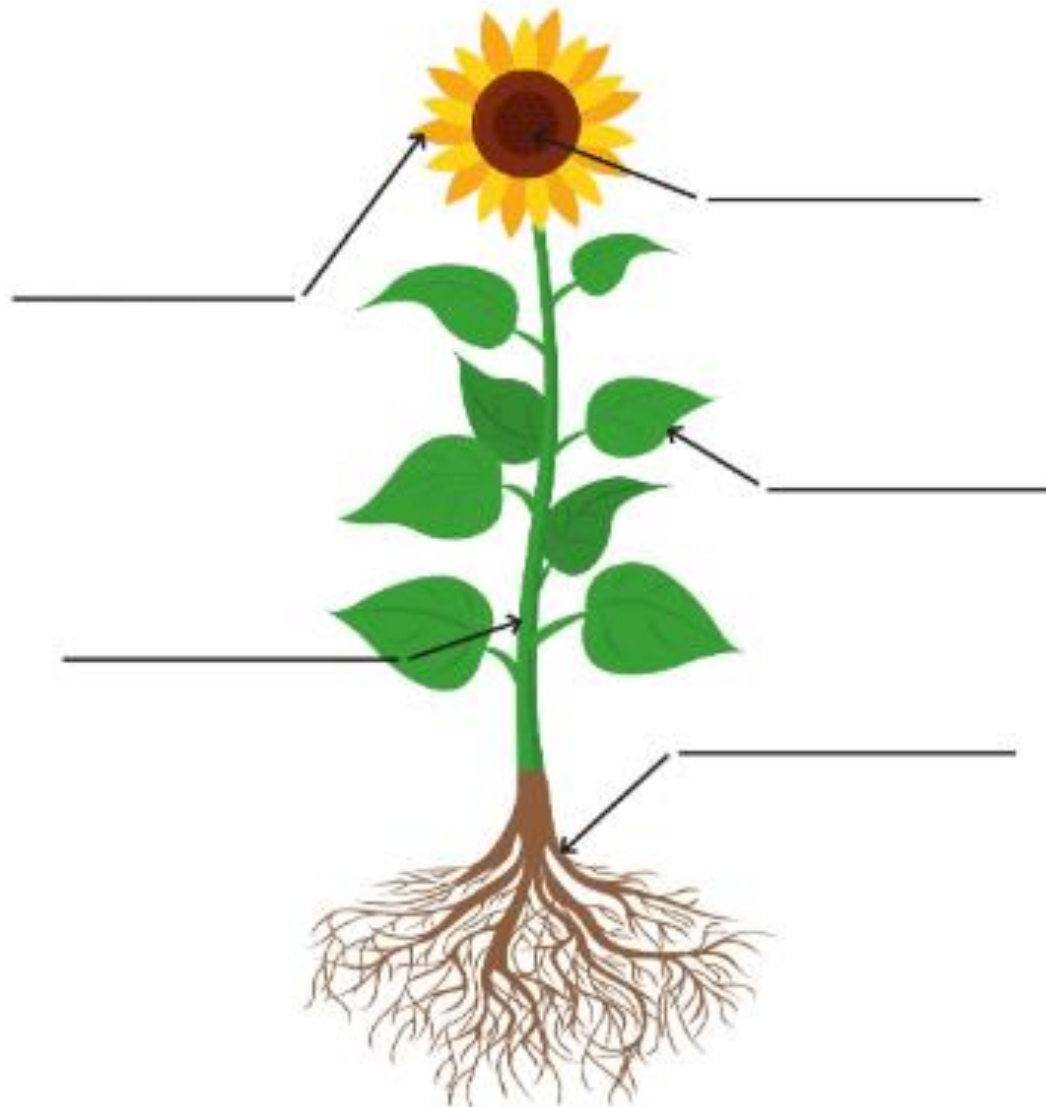
Flower

Stem

Roots

Seeds

Leaves



Different Parts of a Plant

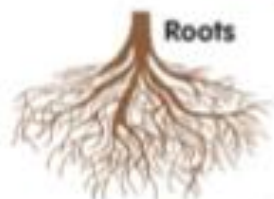
Draw a line from each plant part to the job that it does for the plant.



Flower



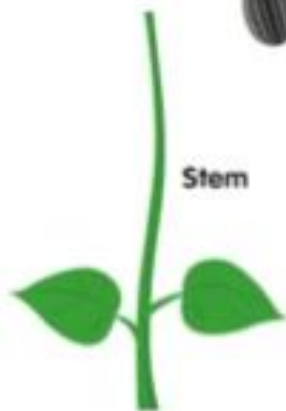
Leaves



Roots



Seed



Stem

Holds the plant up.

Makes a new plant.

Helps to make food for the plant.

Soaks up water from the soil.

Makes pollen and seeds.