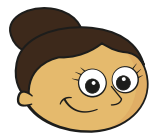


1 Draw counters on ten frames to represent each calculation.

- a) $13 + 3 = 16$
- b) $4 + 9 = 13$
- c) $15 - 1 = 14$
- d) $20 - 12 = 8$



2 A bag of sweets has 8 red sweets and 3 yellow sweets.



There are 12 sweets altogether.

Is Dora correct?

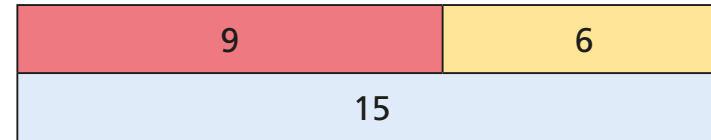
Draw a picture to show how you know.



3 Which calculations can be used to check $14 + 3 = 17$

- $14 - 3$ $17 - 3$ $3 - 14$ $17 - 14$

4 Use inverse operations to check $9 + 6 = 15$



5 Is this true or false?

$$18 - 4 = 14$$

Explain how you know.

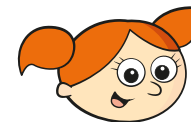
6 Jack is answering some maths questions.

Alex is checking Jack's workings.

$$4 + 5 = 19$$

$$15 - 3 = 18$$

$$4 = 20 - 6$$



I don't need to work them out. I know they're wrong.

How does Alex know this?