

SCIENCE

Plants

LETS SEE HOW A SEED/BULB GROWS

Watch the clip below

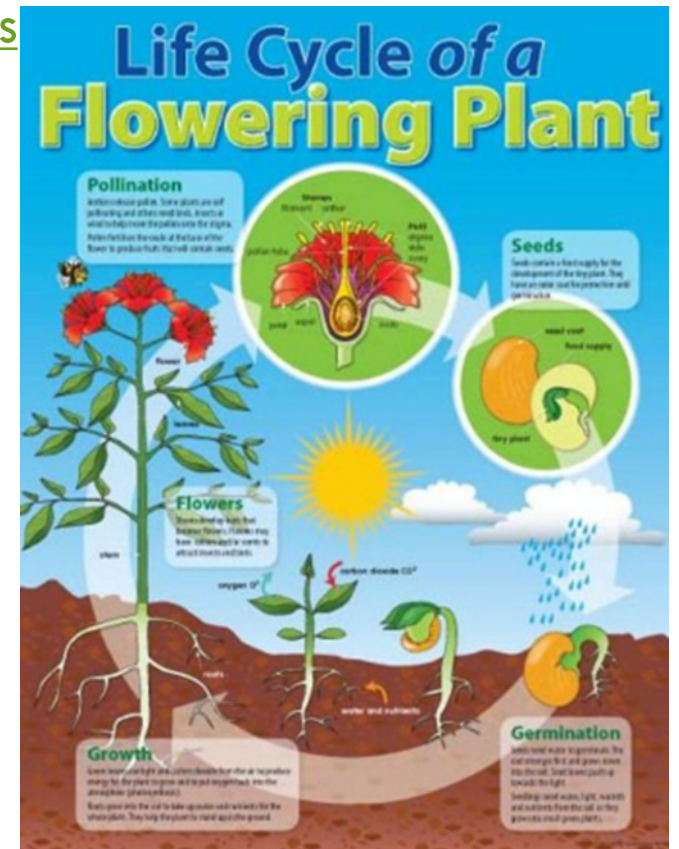
<https://www.bbc.co.uk/bitesize/topics/zpxnyrd/articles/z2vdjxs>

Could you tell an adult what these words mean/are:

Roots

Seeds

bulbs



NOW SEE IF YOU CAN COMPLETE THE CUT AND STICK ACTIVITY PUTTING THE PICTURES INTO THE CORRECT ORDER.

Activity:

Plant Life Cycle

Name: _____ Date: _____

plant seed

seedling sprout

Directions:
Color and cut out the stages below. Glue them in the correct plant life cycle order.

Now see if you can take the quiz back on the bitesize site.